



Mill Creek Watershed Council of Communities GIS Services

Project Highlights

- RA Consultants provided data management services
- Developed web based application and web processing tools

Services Provided

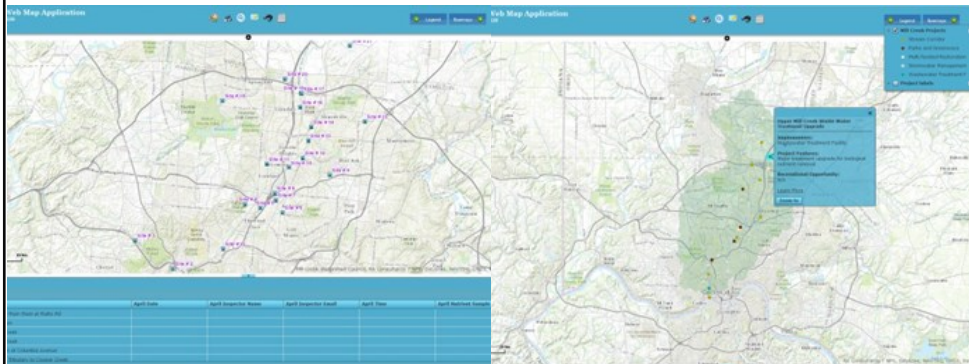
- Base mapping & GIS
- GIS Database Design & Management
- Data analysis
- Web Development

Scan to go to our website



CONTACT:

RA Consultants, LLC
10856 Kenwood Rd.
Cincinnati, OH 45242
(513) 469-6600 (Phone)
(513) 469-2684 (Fax)
info@raconsultantsllc.com
www.raconsultantsllc.com



The Mill Creek Watershed Council of Communities sought a comprehensive mapping effort to include jurisdictional and watershed boundaries; existing land uses in five categories: residential, commercial, industrial, institutional, and recreational; stream and tributary data; water quality monitoring sites; impairment hotspots and prioritized areas for restoration or improvement. A simple user interface was used to ensure this resource will be accessible for stakeholders of all ages.

In order to reduce time and duplication of efforts, RA Consultants created a database and a customized web application utilizing ESRI GIS technology. All existing GIS data and site photos were linked and stored in an ESRI SDE GeoDatabase format. The created web map can be accessed with an internet connection giving access to personnel anytime of the day. All data changes are logged with a time and date stamp along with the name of the editor inside of the SDE database. Data such as water sampling sites and project locations are stored directly in the database.

Documents such as water sampling site datasheets are attached to the database and can be done so by the editor within the web map application. The web application was developed in the flex API for the ESRI ArcServer and connects to a customized SQL database that relates to the SDE GeoDatabase. Programming languages included in the design of the application is a combination of python script; flex API for ArcGIS server, VB, Java and HTML.